

## PRYZM™ LUXURY FLOORING INSTALLATION INSTRUCTIONS

### SPECIAL PRECAUTIONS AND RECOMMENDATIONS:

1. Armstrong PRYZM Flooring may be installed in residential full bathrooms following the guidelines outlined in the Bathroom Installation Section I (Chapter 16).
2. PRYZM Flooring is not recommended over carpets or in high-humidity areas where the floor is normally wet- e.g., steam rooms or saunas.
3. Level floors with a suitable cement-based self-leveling underlayment following the manufacturer's recommended guidelines.
4. Radiant heated subfloors should not exceed 85°F (29°C).
5. **Full Bathroom Installations-** 100% silicone caulk must be used around the entire perimeter. Bathroom installation is for residential use only.
6. Leave PRYZM flooring in the sealed cartons prior to installation. Seal any cartons that will sit overnight.

### A. TOOLS AND MATERIALS

- PRYZM Flooring
- Armstrong EverSeal Adhesive
- Tapping Block
- Pull Bar
- Spacers
- Flooring Coordinated Transitions & Molding Pieces
- Carpenter's Square
- Tape Measure
- Polyethylene Tape
- Hammer
- Utility Knife
- Safety Glasses
- NIOSH-Designated Dust Mask
- Saw (see optional tools)
- 100% Silicone Caulk (for bathroom & high moisture installations)
- Touch-Up Kit / Filler

### B. OPTIONAL TOOLS AND MATERIALS

- Router
- Drill
- Saws
- Table Saw
- Miter Saw
- Circular Saw
- Hand Saw
- Jigsaw
- Undercut Saw
- Dividers
- Chalk Line
- Armstrong Hardwood & Laminate Floor Cleaner (S-302)
- Once 'n Done Resilient and Ceramic No-Rinse Floor Cleaner (S-309)
- Pocket Plane

PATTERN NUMBER	DESIGN NAME	COLOR NAME	PIECE HEIGHT (MM)	PIECE WIDTH (MM)	PIECE LENGTH (MM)	PIECE WIDTH (IN)	PIECE LENGTH (IN)
PC001	Salvaged Plank	White	6.5	167	1,208	6.6	47.56
PC002	Vintage Chestnut	Antique Natural	6.5	145	1,208	5.7	47.56
PC003	Antiqued Oak	Natural	6.5	128	1,208	5	47.56
PC004	Artisan Floorboard	Light Brown	6.5	145	1,208	5.7	47.56
PC005	Native Acacia	Golden	6.5	145	1,208	5.7	47.56
PC006	Treeline Hickory	Amber	6.5	128	1,208	5	47.56
PC007	Maritime	Weathered Gray	6.5	128	1,208	5	47.56
PC008	Gray's Beach	Driftwood	6.5	167	1,208	6.6	47.56
PC009	Exotic Woodgrain	Reclaimed Gray	6.5	128	1,208	5	47.56
PC010	Coastal Concrete	Seascape Gray	6.5	128	1,208	5	47.56
PC011	Azure Sea	Blue Gray	6.5	128	1,208	5	47.56
PC012	Waterfront	Sky Blue	6.5	128	1,208	5	47.56
PC013	Waterfront	Pier Brown	6.5	128	1,208	5	47.56
PC014	Brushed Oak	Tan	6.5	167	1,208	6.6	47.56
PC015	Brushed Oak	Brown	6.5	167	1,208	6.6	47.56
PC016	Brushed Oak	Gray	6.5	167	1,208	6.6	47.56
PC017	Forest Treasure	White	6.5	145	1,208	5.7	47.56
PC018	Forest Treasure	Gray	6.5	145	1,208	5.7	47.56
PC019	Forest Treasure	Brown	6.5	145	1,208	5.7	47.56
PC020	Elements of Heritage	Vintage Multi	6.5	110/144/178	1,208	4.3/5.6/7	47.56

## PRYZM™ LUXURY FLOORING INSTALLATION INSTRUCTIONS

**WARNING:** EXISTING IN-PLACE RESILIENT FLOOR COVERING AND ASPHALTIC ADHESIVES. DO NOT SAND, DRY SWEEP, DRY SCRAPE, DRILL, SAW, BEADBLAST, OR MECHANICALLY CHIP OR PULVERIZE EXISTING RESILIENT FLOORING, BACKING, LINING FELT, ASPHALTIC "CUTBACK" ADHESIVE, OR OTHER ADHESIVE.

- These existing in-place products may contain asbestos fibers and/or crystalline silica.
- Avoid creating dust. Inhalation of such dust is a cancer and respiratory tract hazard.
- Smoking by individuals exposed to asbestos fibers greatly increases the risk of serious bodily harm.
- Unless positively certain that the existing in-place product is a non-asbestos-containing material, you must presume it contains asbestos. Regulations may require that the material be tested to determine asbestos content and may govern removal and disposal of material.
- See current edition of the Resilient Floor Covering Institute (RFCI) publication Recommended Work Practices for Removal of Resilient Floor Coverings for instructions on removing all resilient floor covering structures or contact your retailer or Armstrong Flooring, Inc. 1 800 233 3823.
- The floor covering or adhesive in this package does NOT contain asbestos.

### C. INTRODUCTION

#### FLOATING FLOOR STRUCTURE

PRYZM Flooring is considered a "floating" floor and is installed using a floating floor system. These floors are intended for indoor use only and can be installed over virtually any existing floor structure, they will expand and contract with changes in relative humidity. In Light Commercial installations where the relative humidity cannot be controlled and excessive low humidity is common, the use of T-Moldings or wider molding systems is required.

- Do not attach to the subfloor at any point, unless a full spread glue down option is desired.
- Do not fit flush against any fixed vertical surfaces like walls, pipes, passageways or staircases.
- Relative humidity must be maintained between 35% and 70%. A minimum 1/4" (6.35 mm) to 1/2" (12.7 mm) expansion zone is required around the perimeter of the room as well as against any fixed objects. This zone accounts for the normal movement of the floor system.
- Where the room is larger than 40' (12.19 m) but less than 80' (24.38 m) in plank length or wider than 26' (7.92 m) but less than 52' (15.85 m) in plank width, a minimum of 1/2" (12.7 mm) expansion zone is required around the perimeter of the room as well as against any fixed objects.
- Temperature changes will have little effect on the movement of these floors.
- The number of square feet of PRYZM flooring required is not equal to the number of square feet in the area of the room because the PRYZM flooring must be fit to walls and objects. An approximate cutting allowance of 10% for wood visuals must be added to the square footage estimate.

#### FLOORING GLUE (ARMSTRONG EVERSEAL)

- Specifically designed to create a strong, water-resistant bond between the tongue and groove.
- The integrity of the floor installation depends on the use of the appropriate glue, the amount of glue and the proper installation techniques.
- Easy cleanup.
- Coverage for using flooring glue: up to 150 sq. ft. (500 Lin. ft.)/16 ounce bottle.

### D. SUBFLOOR REQUIREMENTS

Armstrong PRYZM Flooring can be installed over most subfloors and existing floors on all grade levels.

All substrates must:

- meet applicable building codes
- be structurally sound
- show minimal deflection
- be dry, clean and flat

#### PRECAUTIONS:

- PRYZM Flooring may be installed in bathrooms following the guidelines outlined in the Bathroom Installation Section H.
- PRYZM Flooring is not recommended in high-humidity areas where the floor is normally wet- e.g., steam rooms, or saunas.
- The slope should not exceed 1" in 6' (2.54 cm in 1.83 m).
- Variations in subfloor flatness should not exceed 3/16" in 10' (4.76 mm in 3.05 m) or 1/8" in 6' (3.17 mm in 1.83 m). Level floors with a suitable cement-based self-leveling underlayment following the manufacturer's recommended guidelines.
- Radiant heated subfloors should not exceed 85°F (29°C).

#### CONCRETE SUBFLOORS

- Concrete floors must be cured properly and allowed to dry for at least 60 days after the curing process.
- Concrete floors must not show any signs of moisture or alkali.

NOTE: The following tests are required in commercial applications. Either or both tests are acceptable.

- Calcium Chloride Test (ASTM F1869): The maximum moisture transfer must not exceed 8 lbs./1000 sq. ft. in 24 hrs.
- RH Levels in Concrete Using In-situ Probes (ASTM F2170) should not exceed 90%.
- If excessive moisture, over 90% RH, is present or anticipated, use Armstrong VapArrest S-135 Professional Moisture Retardant System, the use of a 6 mil poly sheet can be used, tape all seams.

#### Wood Subfloors

- Wood subfloors must be suspended and have a minimum of 18" (45.7 cm) of well-ventilated crawl space.
- Regardless of grade level, do not install over wood subfloors applied directly to concrete or on sleepers over concrete.
- Installation of a 6 mil minimum polyethylene film vapor barrier over the ground in the crawl space is recommended if areas with excessive moisture over 90% RH. The polyethylene film acts as a moisture barrier when seams are taped together with polyethylene tape.

#### Underlayment Boards

- PRYZM Flooring can be installed over any wood, cement or gypsum-based underlayment boards that are installed according to the manufacturer's recommended guidelines.

#### Wood Flooring

- All wood flooring must be dry, level, flat and installed over suspended subfloors.
- The wood subflooring materials must not exceed 15% moisture content. Using a reliable wood moisture meter, measure the moisture content of the subfloor.
- Sand any ridges or uneven portions and repair squeaks.
- Install Armstrong PRYZM Flooring at a 90° angle to existing wood plank flooring.
- Wood flooring over concrete must be removed.

#### Ceramic and Resilient Tile

- **Tile installed over concrete:** All grout joints and broken corners that exceed 3/16" (5 mm) must be filled with a cementitious leveling compound

such as Armstrong S-194 Patch, Underlayment & Embossing Leveler with S-195 Underlayment Additive. The surface should be cleaned and abraded to create a good bonding surface for the adhesive. Loose tiles must be re-adhered to the subfloor or filled as above. Remove all sealers and surface treatments. Always check for adequate adhesive bond.

#### • Tile installed over wood:

All grout joints and broken corners that exceed 3/16" (5 mm) must be filled with a cementitious leveling compound such as Armstrong S-194 Patch, Underlayment & Embossing Leveler with S-195 Underlayment Additive. The surface should be cleaned and abraded to create a good bonding surface for the adhesive. Loose tiles must be re-adhered to the subfloor or filled as above. Remove all sealers and surface treatments. Always check for adequate adhesive bond.

#### Vinyl Sheet

#### • Vinyl sheet installed over concrete:

No additional underlayment is needed for PRYZM with attached backing

#### • Vinyl sheet installed over wood:

No additional underlayment is needed for PRYZM with attached backing.

### E. ROOM PREPARATION

#### CONDITIONING

1. Most PRYZM floors do not require acclimation, depending on storage conditions; it is advised that the product being installed be within the same temperature range of the room during service conditions.
2. Relative humidity must be maintained between 35% and 70%.
3. The room temperature should be at a minimum of 45°F for 48 hours before, during and for 48 hours after installation.
4. During and after installation, the room temperature should not exceed a maximum of 95°F (35°C).
5. If the above conditions cannot be met a 4 hour acclimation period is required.

#### PREPARATION

1. Removal of existing wall base, millwork or trim is optional.
2. Door trims and doorjamb must be undercut to allow the floor to move freely. Use a discarded piece of floor to support the saw blade at the correct height for undercutting (Fig. 1).

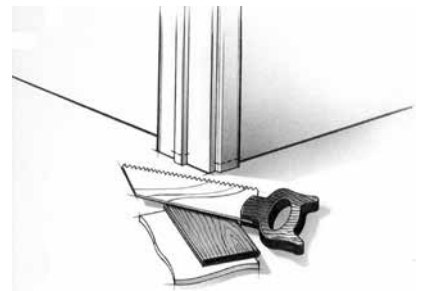


Fig. 1

3. Sweep the subfloor and remove all dust and debris.
4. If the drywall is slightly elevated at the floor and wall juncture, create a solid wall surface by fastening a 2" to 3" (5 cm to 7.6 cm) wide facing strip (such as 1/4" (6.35 mm) plywood) to the wall at the stud location.
5. New wall base or molding must be installed at the end of the job to cover the 1/4" (6.35 mm) to 1/2" (12.7 mm) expansion zone around the perimeter of the floor. The wall base or molding coverage should be equal to the 1/4" or 1/2" expansion zone, especially in dry conditions.

## PRYZM™ LUXURY FLOORING INSTALLATION INSTRUCTIONS

6. It may be necessary to plane or cut the bottom of the door to accommodate the change in floor height.
7. Handle and unload with care. Store in a dry place, being sure to provide at least a 4" air space under cartons which are stored upon "on-grade" concrete floors. Flooring should not be delivered until the building has been enclosed with windows, doors are in place and cement work, plastering and all other "wet" work is completed and dry.
8. Although it is not necessary to acclimate PRYZM flooring, prior to the installation it is best to store it in the environment in which it is expected to perform. If room temperature is outside of the 45 to 95 degree Fahrenheit range, then you must acclimate PRYZM for 4 hours prior to installation. Keep the PRYZM flooring in the sealed cartons. Check adhesive label for adhesive storage limitations.

### LAYOUT

1. Install parallel to incoming light from any windows or, if lighting is not a concern, parallel to the longest wall in the room (Fig. 2).

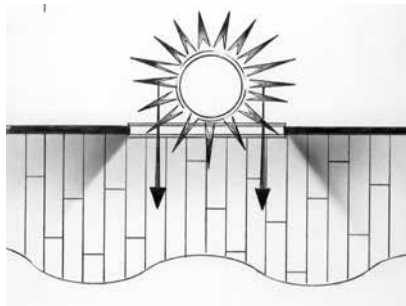


Fig. 2

### HIGH MOISTURE AREAS

It is a good idea to use 100% silicone caulk in areas of rooms where excessive moisture may be present, such as at kitchen sinks, dishwashers and ice makers. See Bathroom Installation section for instructions on Full Bathroom Installations Section H.

### INSTALLING CABINETS

- Install cabinets and then PRYZM around the cabinets, leaving the 1/4" (6.35 mm) to 1/2" (12.7 mm) expansion zone.
- If installing cabinets after the PRYZM has been installed, most or all of the cabinet weight should be supported by the wall mountings. To secure the cabinets to the substrate with screws or nails, drill holes through the PRYZM 1/2" (12.7 mm) diameter larger than the screw or nail to allow for expansion.

### INSTALLING KITCHEN ISLANDS

- The island must be freestanding and weigh less than 250 pounds if it is to be installed over the PRYZM.
- If the island weighs more than 250 pounds, the PRYZM flooring is to be installed around the island, allowing the normal 1/4" (6.35 mm) to 1/2" (12.7 mm) expansion area around the base of the island.
- If the PRYZM already been installed, and the island must be installed over the PRYZM, and the island weighs more than the 250 pound maximum, drill holes through the PRYZM 1/2" (12.7 mm) diameter larger than the bolts (to allow for expansion) and bolt the island to the subfloor.

### General Installation Tips

- If possible, remove all wall mounted moldings such as base and quarter-round.

NOTE: DO NOT INSTALL FLOORING USING RUBBER MALLETS. STRIKING THE SURFACE WITH A RUBBER Mallet MAY "BURN" THE FINISH, CAUSING IRREPARABLE DAMAGE.

### GETTING STARTED: ALL INSTALLATIONS

Always check each plank for damage before installing.

1. Avoid narrow pieces at the finish wall. Measure the distance between the starting wall and the finish wall.
2. Divide this number by the width of the board.
3. If the remainder is less than 2-1/2" (6.35 cm), cut off 2-1/2" (6.35 cm) from the width of the first row or (to balance the room) add the difference to the plank width and divide by two.

To minimize pattern repeats in the floor, always pull from at least 3 cartons of flooring while installing.

### WALL IRREGULARITIES

All wall irregularities require cutting the first or last row of boards to fit the contour of the wall.

1. Use dividers or a 1" (2.54 cm) spacer turned sideways to mark the contour (Fig. 3).

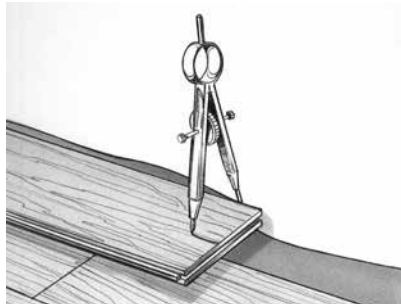


Fig. 3

2. Cut to shape.
3. Position the cut piece, using the pull bar to tighten the last piece in place.
4. Place a spacer between the end of the board and the side wall.
5. Two tapered spacers can be used as wedges to accommodate irregular walls (Fig. 4).

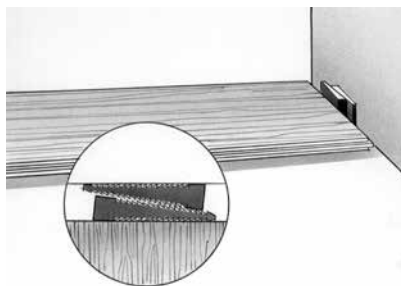


Fig. 4

### CUTTING

1. A good quality carbide-tipped cutting blade.
2. When using a hand saw, cut with the decorative side of the board facing up.
3. When using power saws, the direction of blade must cut into the decorative side of the board to minimize chipping.
4. Use a square to keep your cut line straight.
5. Cut the marked piece in another area to keep the sawdust away from the installation site.

### INSTALLING UNDER A DOOR JAMB OR TOE KICK (ALL INSTALLATIONS)

Installation of locking PRYZM flooring through a door jamb or under a toe kick requires the lip of the groove to be reduced in size.

1. Using a small plane or utility knife, plane or shave off 75% of the ledge of the groove.
2. Be careful not to trim too much. Excessive reduction can weaken the joint.

3. After the groove ledge has been trimmed, place the board in position laterally and lightly pull the board into place using the pull bar.
4. Sometimes, more than one passing may be necessary in order to trim the ledge of the groove to the correct height.
5. Joint should be tight with no movement; however, a thin 3/32" (2.4 mm) bead of glue on top of tongue only should be used at this juncture to ensure joint integrity.

### FINISHING THE INSTALLATION (ALL INSTALLATIONS)

1. Remove spacers and install molding pieces. (See Coordinated Transitions and Molding Pieces Section I.)
2. Always predrill transitions or moldings prior to nailing. To allow the floating floor to move freely, do not fasten the trim to the PRYZM flooring.
3. For routine cleaning, vacuum or damp mop. To remove excessive dirt buildup, use Armstrong Hardwood & Laminate Floor Cleaner (S-302) or Once 'n Done Resilient and Ceramic No-Rinse Floor Cleaner (S-309).
4. DO NOT WAX OR POLISH your floor.

### F. ANGLE/ANGLE LOCK, LOCKING PRYZM PLANKS — WOOD VISUALS

#### INSTALLING THE FIRST ROW

1. Begin on the left side of the room and work right.
2. Lay the first full piece with the small, tongue side facing the wall.
3. Install second and subsequent full pieces in the first row by aligning short ends of boards and locking into place
4. Use spacers along all sides that butt up against walls to maintain 1/4" (6.35 mm) to 1/2" (12.7 mm) expansion zone.
5. Continue laying boards in the first row until you need to cut the last piece.
6. Measure the distance between the wall and the face surface of the last board. Subtract 1/4" (6.35 mm) and cut the board. (See cutting instructions above.)
7. If this distance is less than 8" (20.32 cm) go back to the first full plank and cut approximately 8" (20.32 cm) from the end closest to the starting wall. This will leave a longer piece at the end of the first row.

#### INSTALLING REMAINING ROWS

1. Begin the second row of planks with the piece cut from the last piece in the first row. If the piece is shorter than 8" (20.32 cm), cut a new plank in half and use it to begin the second row. Whenever practical, use the piece cut from the preceding row to start the next row. End joints of all boards should be staggered 8" (20.32 cm) or more. Grout lines on planks with tile visuals can be aligned, or off-set as long as end joints are staggered.
2. Install the long end of the first board at an angle to the board in the previous row. Keep this board at its natural angle slightly raised off the subfloor. Use a scrap piece of PRYZM to support the row if needed.
3. Continue installing full boards in the second row by angling the short end of the next board in the row to lock into the previous board. Position the board so that the long side of the board is close to boards in the previous row and overlapping the groove of the boards in the previous row.
4. Angle up and push forward until the boards lock together.
5. Continue installing full boards in the second and subsequent rows until you reach the wall on your right.
6. Mark the last piece, cut and install. After all boards in the row are installed, press or walk all boards flat to the subfloor to begin the next row. A tapping block may be used to fully engage the planks.
7. Use a pull bar when necessary to ensure joints are tight.

#### INSTALLING THE LAST ROW

1. The last row in the installation may need to be cut lengthwise.
2. Place the row of planks to be fit on top of the last row of installed planks. Use a divider or a piece of the plank as a scribe to trace the contour of the wall.

**PRYZM™ LUXURY FLOORING INSTALLATION INSTRUCTIONS**

3. Be sure to place a spacer between the marking pen and "scribe" piece of board. This adds the 1/4" (6.35 mm) to 1/2" (12.7 mm) space you need at the finish wall.
4. Mark where the board should be cut.
5. If the fit at the finish wall is simple and straight, just measure for the correct width and cut.
6. After the last row is installed, use the pull bar to tighten the joints.
7. When appropriate, cut the underlayment even with the top of the floor.
8. Install the long end of the first board in the second row at an angle to the board in the first row. Press flat to subfloor to lock into place.
9. Angle the long end of the next board in the second row to lock into the first row while positioning the short end of the board over the groove from the previous board. Lock and fold into place.
10. Follow the order described above to continue laying the boards in the second and additional rows.
11. Use a pull bar if necessary to tighten joints.

**H. FULL BATHROOM INSTALLATION RECOMMENDATIONS FOR LOCKING PRYZM**

1. All perimeter expansion zones must be completely filled with 100% silicone caulk following the manufacturer's recommendations. When applying caulk, it is helpful to first apply a strip of masking tape parallel to and approximately 1/32" (.79 mm) from the edge of the PRYZM flooring. Then fill the expansion zone with caulk, remove the excess with a plastic scraper or putty knife and remove the tape.
2. Molding may be used along a straight tub or shower base. The expansion zone should be filled with 100% silicone caulk and the molding seated in the caulk while it is still wet. The joint between the molding and the tub or shower base should also be caulked. If molding is not an option, a normal 1/4" (6.35 mm) expansion zone may be used at the tub and then completely filled with 100% silicone caulk.
3. The toilet should be removed before installing the PRYZM flooring. Allow a 1/4" (6.35 mm) expansion zone between the PRYZM flooring edge and the toilet flange. Completely seal the zone with 100% silicone caulk.
4. As with any hard-surfaced material, PRYZM flooring can be slippery when wet.

**I. COORDINATED TRANSITIONS AND MOLDING PIECES**

Armstrong Flooring offers color matched multi-purpose, flush stairnose, overlap stairnose and end cap profiles to complete the floor installation.

- Attach any of these pieces with nails (6d finish nails) or construction adhesive. When using construction adhesive, weigh down the transition strip evenly to ensure proper contact with the subfloor. Do not use an excessive amount of construction adhesive that could ooze out and fill the expansion zone.
- To allow the floating floor to move freely, never fasten the transition pieces to the flooring.
- Keep the placement of the transition strip such that the 1/4" (6.35 mm) expansion around the perimeter is maintained.
- When installing over a radiant heated floor, always use construction adhesive to attach transition pieces.
- Always pre-drill any of these pieces with the appropriate size drill bit to avoid cracking or splitting the strip.
- To prevent core from being exposed, add a "return" to the ends of molding at outside corners; for inside corners miter at a 45° angle if corner is square or use a cope saw if corner is not square.

**MULTI-PURPOSE REDUCER**

Provides a smooth transition from your PRYZM flooring to another type of flooring of a lower height. Also finishes the space where PRYZM flooring ends against a vertical surface and where quarter-rounds cannot be used.

**J. SPECIAL CUTTING PROCEDURES**

**IRREGULAR-SHAPED PIECES**

Make a paper pattern for irregular-shaped pieces, and transfer the pattern to the piece to be cut.

**HOLES FOR PIPES**

1. In placing the hole on the end of the piece PRYZM measure and drill a hole that is 1/2" (12.7 mm) larger in diameter than the pipe.
2. Cut across the piece through the center of the hole.
3. Glue the edge of the end piece.
4. Use the pull bar to put the piece in place.
5. Use spacers as wedges to hold in place.
6. In placing the hole on the long side of the piece of PRYZM, mark and drill a hole that is 1/2" (12.7 mm) larger in diameter than the pipe.
7. Cut in from the edge at a 45° angle toward the holes in the piece.
8. Apply glue to the cut edges.
9. Use the pull bar to put the piece in place.
10. Use spacers as wedges to hold in place.

**L. REPAIRING LOCKING PRYZM**

**MINOR REPAIRS**

Minor chips or scratches can easily be repaired using a color-matched Armstrong Flooring Touch-Up Kit or Filler Kit.

**MAJOR REPAIRS- CLOSE TO A PARALLEL WALL**

1. In case of a major problem with the locking system, it is possible to replace an entire piece of the flooring. In most cases, just remove the molding from the walls nearest the damaged board (Fig. 5).

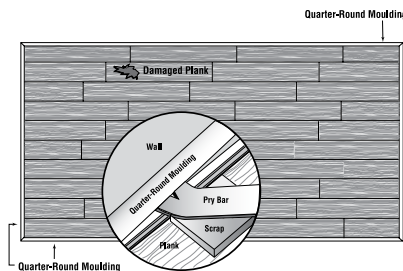


Fig. 5

2. Remove the boards by unlocking them (Fig. 6). Number the boards, on the back, so they may be repositioned later. You can work in either direction, carefully working back to the damaged piece.

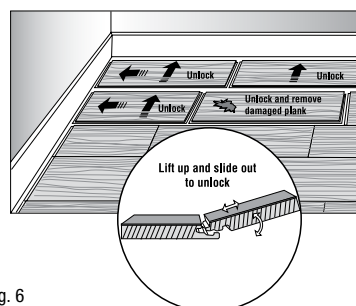


Fig. 6

3. Replace the damaged board with a new one. Reassemble the floor (Fig. 7).

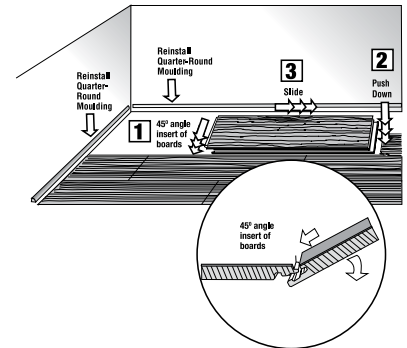


Fig. 7

**MAJOR REPAIRS- IN CENTER OF ROOM (REPAIR IS PERMANENT)**

1. Check replacement board for damage, size and fit.
2. Mark damaged board 1-1/2" (3.81 cm) from ends and sides. Drill 3/16" (4.76 mm) holes in corners and at relief cuts (Fig. 8).

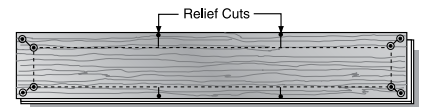


Fig. 8

3. Set saw depth to board thickness. Cut along lines and remove center section. Make relief cuts using drilled holes as visible stop.
4. Carefully lift and pull center length cut first, then work into corners to remove end pieces last.
5. If the floor was installed with Armstrong Everseal, clean factory edges using a sharp chisel. Remove glue from top of groove using a tongue and groove cleaner tool or a small piece of PRYZM with tongue edge.
6. Prepare replacement board by removing bottom of groove on end and side (Fig. 9).

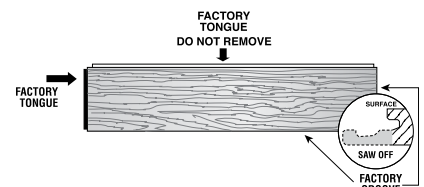


Fig. 9

7. Carefully remove tongue from end of board with sharp utility knife.
8. Clean area thoroughly and test fit. Check for high edges and adjust fit using 120-grit sandpaper.
9. Apply Armstrong Everseal to top of tongue and bottom of groove.
10. Carefully place the new piece into the opening. Press firmly.
11. Remove all residual glue on the surface with a clean, damp cloth.
12. Make sure all edges are even on either side of the joints. Apply pressure for at least 24 hours using heavy weights.
13. Make sure that the weight is evenly distributed across the new piece.

**ARMSTRONG EVERSEAL ADHESIVE**

**Caution:** Eye and Skin Irritant

For use in Residential and Light Commercial installations.

## PRYZM™ LUXURY FLOORING INSTALLATION INSTRUCTIONS

DESCRIPTION	
Type	Polyvinyl acetate cross-linking emulsion (water-based)
Color	White when wet; dries opaque in 1 hour. Contains no visible taggants.
Taggants	None
Applicator	Predrilled cap on 16 oz. bottle
Spread Rate	3/32" (2.4 mm) bead up to 150 sq. ft. (500 lin. ft.)/16 oz. bottle
Units	Single unit 16 oz. bottle (473 ml)
Removal from surface	Wet: clean, white cloth dampened with warm water. Dry: can be easily peeled away. Remove residue/haze with cloth dampened 8 oz. (1 cup) white distilled vinegar to 1 gal. water (1:16 ratio)
Advantages	Nonflammable Easy clean up Designed to create a strong water resistant bond between tongue and groove; use for PRYZM installations in full bathrooms, high moisture areas and light commercial and commercial environments.
Shelf Life	1 year, unopened
Freeze/Thaw Stable	Keep from freezing
VOC Content	25 g/L; calculated and reported, SCAQMD 1168
Storage	Keep from freezing
Items per carton	12 per carton
Weight	14.4 lb./ctn

PLEASE SEND CORRESPONDENCE TO:  
[customerservice@armstrongflooring.com](mailto:customerservice@armstrongflooring.com)











## INSTRUCTIONS D'INSTALLATION DU REVÊTEMENT DE SOL DE LUXE PRYZM<sup>MC</sup>

3. Remplacez la planche endommagée par une nouvelle planche. Réassemblez le plancher (Fig. 7).

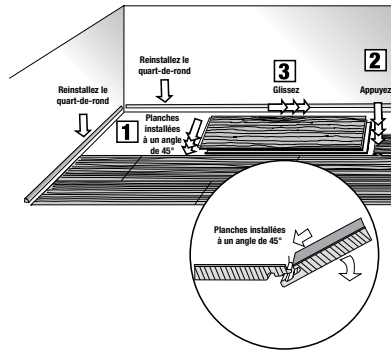


Fig. 7

### RÉPARATIONS MAJEURES - AU CENTRE DE LA PIÈCE (RÉPARATIONS PERMANENTES)

- Vérifiez si la planche de remplacement est endommagée et si elle est de la dimension appropriée.
- Tracez une ligne à 3,81 cm (1-1/2 po) des extrémités et des côtés de la planche endommagée. Percez des trous de 4,76 mm (3/16 po) de diamètre dans les coins et aux coupes en relief (Fig. 8).

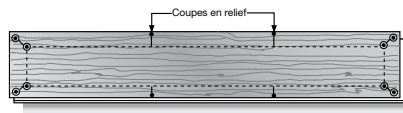


Fig. 8

- Ajustez la profondeur de la scie à l'épaisseur de la planche. Coupez le long des lignes et enlevez la section centrale. Faites des coupes en relief en utilisant les trous percés comme point d'arrêt visible.
- Soulevez d'abord la partie centrale et enlevez-la avec précaution, puis attaquez vous aux coins en enlevant les morceaux situés aux extrémités en dernier.
- Si le plancher a été installé avec de la colle EverSeal Armstrong, nettoyez les bordures usinées à l'aide d'un ciseau bien aiguisé. Enlevez la colle sur le haut de la rainure au moyen d'un outil nettoyant pour languettes et rainures ou de la languette d'un petit morceau de PRYZM.
- Préparez la planche de remplacement en enlevant la partie inférieure de la rainure à l'extrémité et sur le côté (Fig. 9).

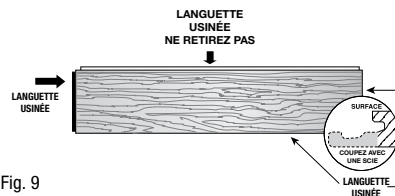


Fig. 9

- Enlevez avec précaution la languette située à l'extrémité de la planche avec un couteau universel bien aiguisé.
- Nettoyez bien la surface et vérifiez si le morceau est de la bonne dimension. Vérifiez la hauteur des bordures et effectuez les ajustements au moyen d'un papier abrasif ayant un grain 120.
- Appliquez de la colle EverSeal Armstrong sur le dessus de la languette et sur la partie inférieure de la rainure.
- Placez avec précaution le nouveau morceau dans l'ouverture. Appuyez fermement.
- Enlevez tous les résidus de colle à la surface avec un chiffon propre et humide.
- Assurez-vous que toutes les bordures sont égales de chaque côté des joints. Appliquez une forte pression pendant au moins 24 heures. Utilisez des objets lourds.
- Assurez-vous que le poids est réparti également sur toute la surface du nouveau morceau.

### ADHÉSIF EVERSEAL ARMSTRONG

**Mise en garde :** Irritant pour les yeux et la peau  
Pour un usage dans les installations résidentielles et commerciales.

DESCRIPTION	
Type	Émulsion en acétate de polyvinyle pour liaison croisée (à base d'eau)
Couleur	Blanc lorsque humide; devient opaque en 1 heure. Ne contient aucun traceur visible.
Traceurs visibles	Aucun
Applicateur	Bouchon prépercé sur la bouteille de 473 ml (16 oz)
Taux d'étalement	Cordon de 2,4 mm (3/32 po) jusqu'à 150 pi2 (500 pi linéaires)/bouteille de 16 oz
Unités	Une seule unité de bouteille de 473 ml (16 oz)
Nettoyage de la surface	Humide : chiffon propre blanc humidifié avec de l'eau tiède. Sec : peut facilement être pelé. Retirez les résidus/voiles avec un chiffon humidifié avec 250 ml (8 oz) de vinaigre blanc dilué dans 3,78 l (1 gal) d'eau (ratio de 1:16)
Avantages	Non inflammable Facile à nettoyer Conçu pour créer une forte adhésion et résistante à l'eau entre la languette et la rainure; utilisez pour l'installation de PRYZM dans les salles de bain complètes, les endroits très humides et les milieux de type commercial et commercial léger.
Durée de conservation	1 an si non ouvert
Stabilité gel/dégel	Protégez du gel
Contenu en COV	25 g/l; calculé et rapporté, SCAQMD 1168
Entreposage	Protégez du gel
Nombre d'unités par carton	12 par carton
Poids	6,53 kg (14,4 lb)/ctn

VEUILLEZ ENVOYER TOUTE CORRESPONDANCE À :  
[customerservice@armstrongflooring.com](mailto:customerservice@armstrongflooring.com)