

INSTALLATION INSTRUCTIONS

Bestlaminat® Adduri® A+B SPC floor (herringbone) 5.5mm with pre-attached underlayment - 1.5m²/box

Read the instructions before installation. The product must be installed, maintained and used in strict compliance with the installation and cleaning & maintenance instructions. Any breach of instructions will void the warranty.

IMPORTANT!

- Installation is possible only inside buildings.
- The product cannot be installed in places exposed to flooding (sauna, swimming pool, shower area).
- The product is intended for installation only as floating floor.
- Do not use additional underlay for panels or vapor barrier film. The underlayment is pre-attached.
- The product can be installed on many subfloors such as concrete screed, self-leveling screed, OSB boards, existing hard floors (e.g. glued floors, parquet, ceramic tiles – gaps in joints over 3 mm should be leveled with putty).
- Do not install the floor on other floating floors (e.g. other click panels) or on carpets.
- It is forbidden to install the panels on electric underfloor heating. Installation on built-in underfloor water heating is permitted, provided that the floor temperature does not exceed 27°C. The underfloor heating should be switched off 24 hours before the planned installation and turned on only after another 24 hours after the installation is completed. The heating should be turned on gradually every 5 °C per day.
- The surface of the subfloor must be stable, smooth, dry, clean, flat and leveled, with a maximum permissible deviation of 3 mm within a radius of 1.20 m. Any unevenness above 3mm must be leveled or filled with floor putty (filler for gaps). Uneven ground can damage locks, and any gaps cannot be deeper than 1 mm.
- The panels can be installed in rooms where humidity is less than 40%. Do not lay panels in a room with humidity of more than 60%. In the case of concrete screed, self-leveling, the humidity of the substrate must not be more than 2%.
- Do not cut the panels with a saw in the same room where they will be laid.
- Peripheral expansion gap and expansion gaps between rooms of at least 8mm are required.
- When installing near blowing heating (warm air heating systems), leave the expansion gap min. 15-20 mm around the ventilation grilles.
- Around heating pipes and other obstacles, the min. 8 mm expansion is also required.
- In the event that there are surfaces with underfloor heating and without it in one room, they must be separated from each other by expansion gap.
- The product cannot be installed under or near fireplaces. Installation of panels in a room with a fireplace requires maintaining appropriate distance from the fireplace and leaving at least 15-20mm expansion gap from the surface on which the fireplace is placed.
- Do not install panels in rooms with large temperature fluctuations.

NOTE: Heavy or permanently attached items (e.g. kitchen furniture, built-in cabinets, kitchen islands, heavy cookers, etc.) in a room should be installed first and not mounted on SPC floor. Around all heavy, permanently attached furniture, the recommended 8mm expansion gap should be maintained.

BEFORE INSTALLATION: Floor panels must be carefully inspected for material defects before installation. Do not install panels with visible defects. The variety and frequency of grain structures, knots of wood and cracks is a decorative element of the pattern and does not constitute a defect of the product. Before installation, the panels should be subjected to a minimum of **24-48** hours of acclimatization in the room in which they will be installed. The room temperature before, during and after installation should not exceed **15-20 °C**. Do not remove planks from boxes during acclimatization.

TOOLS NEEDED: circular saw, ruler, tape measure, expansion wedges, jigsaw/guillotine for planks, safety glasses, protective mask, rope, pencil, cut off piece of panel, small hammer or wooden block, pull bar for planks

NOTE: All door frames and jambs must be undercut so that the vinyl floor can move freely. Expansion gap is required at each door and when the maximum size of the room is exceeded:

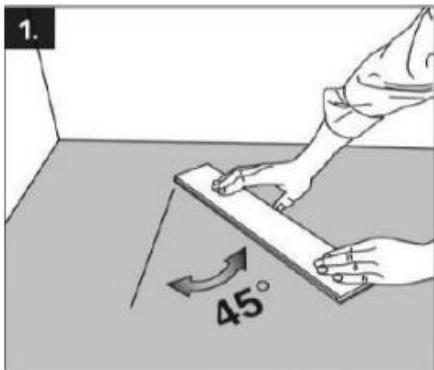
- For standard residential use (15-35°C), the maximum room size is 10x10m
- For more extreme temperatures (5-40°C), the maximum room size is 8x8m.

INSTALLATION

Note: There are 20 panels (10 A + 10 B) in the box. Planks A are marked with a letter A on the underside. B planks are marked with a letter B. Before proceeding with installation, set panels A and B in two separate stacks.

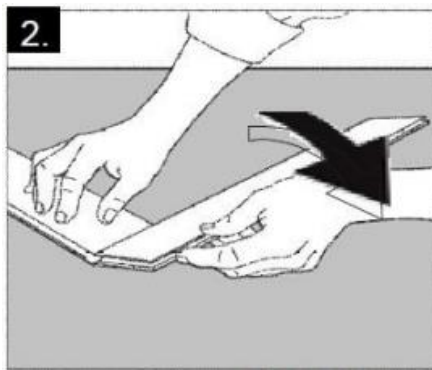
Do not hit the panels directly onto the lock tongues which are easy to damage. Use for this purpose a piece of panel, through which you can hit lightly with a small hammer or wooden block. Remember to use the opposite groove to the hammered tongue when hitting, so as not to damage the joint with the same tongue. For the time of hitting, connect the hit panel with the beaten piece to transfer the impact force to the entire panel. After finishing, you can lift up the piece that was beaten and use it later.

Note: Please make sure that no particles of dust and debris get into the locks. If necessary, locks should be carefully vacuumed, otherwise the floor may crackle and make other sounds, and the locks may be damaged.



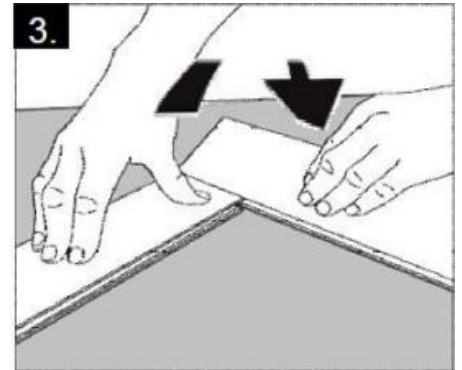
Panel A

Start installation from left to right with panel A. Place it with the longer side at an angle of 45°. Make sure that the distance between the left wall and the panels is less than the length of the panel.



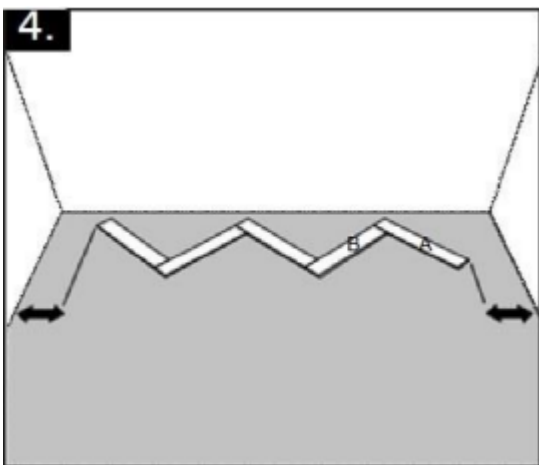
Panel B

Continue installation by attaching panel B. Connect the longer edge of the panel at an angle of 45° to the short end of the previously laid panel A. Check if connection between the two panels is tight and forms a solid line.



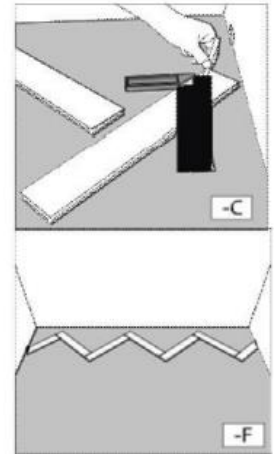
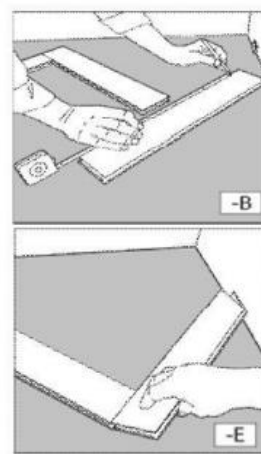
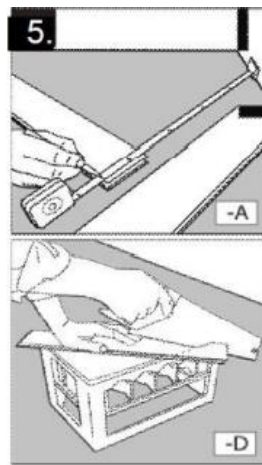
Panel A

Then take another panel A. Slide the longer edge of panel A at an angle to the short end of the previous panel and fold them together. Continue to lay out next panels in this way until you reach the end of the wall.



Center the first row

Check if the first row of panels is centered to the starting wall. Make sure that the distance from both sides is less than the length of the panel. If not, add another panel to the left.

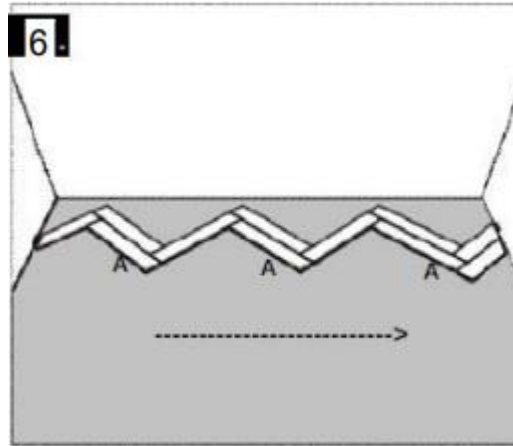


Cutting last planks to size

Measure and cut last panels to size using hand saw or floor cutter (guillotine). Finish the first row with cut pieces of planks. Make sure you leave 8-10mm expansion gaps around each wall.

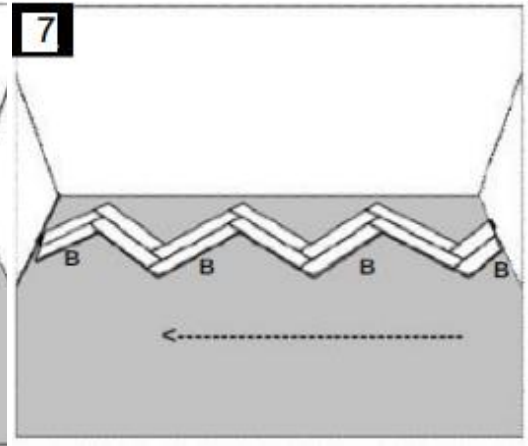
Start second row

Start laying the second row with another panel A. Connect the panel to the previous row at the shorter side and put it on the floor as close as possible to the second panel along the longer side, then use a cut piece of panel for finishing with the opposite groove so as to temporarily connect planks and not damage the lock of the panel while hitting with a hammer or a piece of wooden block.



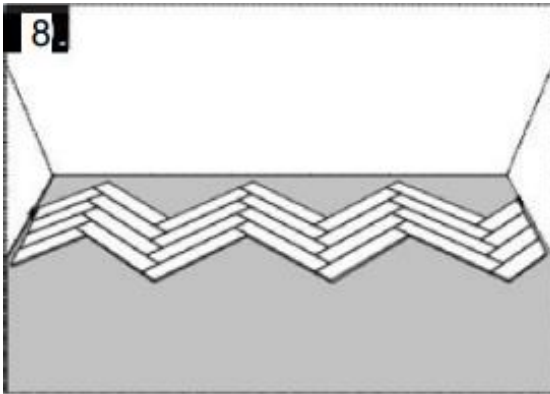
Installation of planks A

Continue from left to right to install all the A panels in the second row. Finish with a piece of panel cut to size. (see p.5)



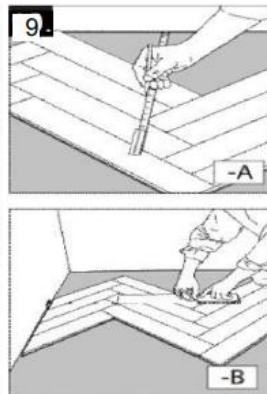
Installation of planks B

Then continue installation by moving in the opposite direction from right to left, laying the panel B in the second row. Finish the assembly in this row with a cut to size piece. (see p.5)



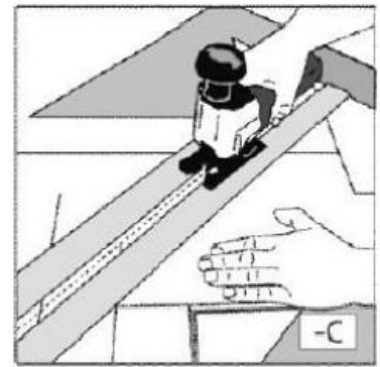
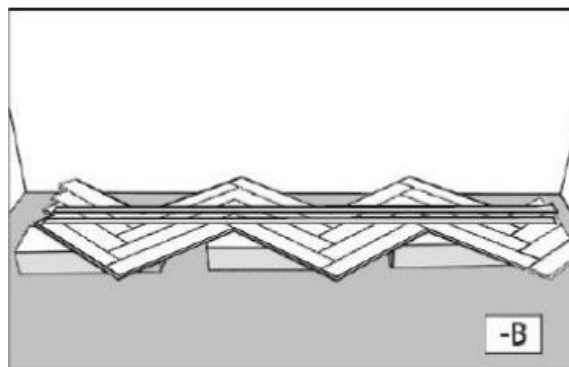
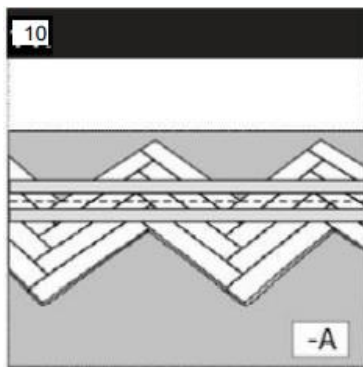
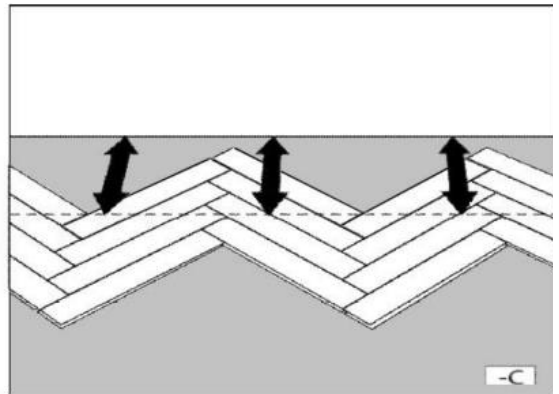
Place complete four rows

Install next planks according to pattern indicated in point 6 and 7.



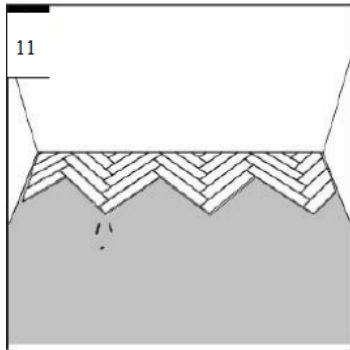
Adjust first rows

First four rows should be cut parallel to the wall. Measure and mark cutting line parallel to the wall.



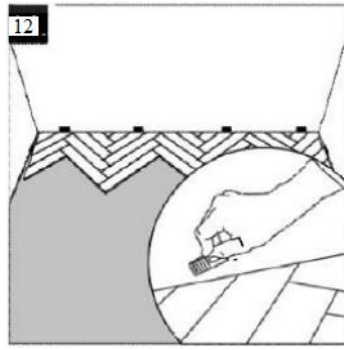
Cut first rows

Installed floor rows should be placed on a few floor boxes and carefully cut along the marked line, Then place the cut row next to the wall.



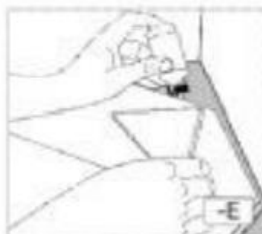
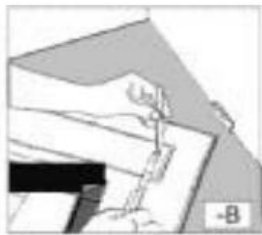
Install next rows

Move the cut floor towards the wall, make sure to leave enough space for expansion gap.



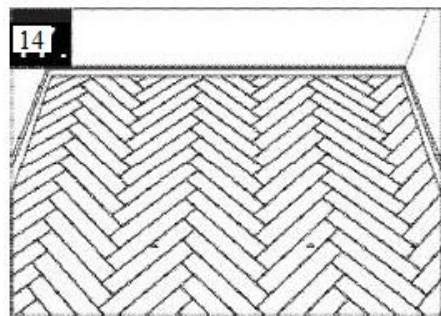
Place expansion wedges

Place expansion wedges between floor and wall to make sure the expansion gap is 8-10mm, which is necessary for the floating floor. Continue installation of next rows according to the pattern shown in point 6&7 until you finish.



Last row

Measure and cut the planks from last row. It is recommended to use glue to install the smallest pieces of a plank. Apply a small amount of glue on the lock groove.



Remove expansion wedges and install moldings.

Remove expansion wedges and cover the expansion gaps with floor skirting, install T-moldings.

Before first cleaning of the floor please read Bestlaminat® SPC Cleaning & Maintenance Instructions.